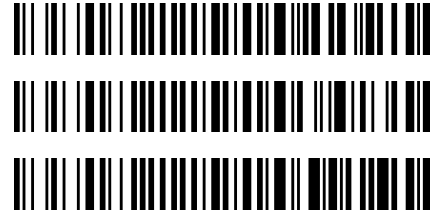


REVIEWED
By Tamara Salazar at 2:43 pm, Oct 06, 2023



Worklist: 6520

<u>LAB CASE</u>	<u>ITEM</u>	<u>ITEM TYPE</u>	<u>DESCRIPTION</u>
C2023-2014	1	UCK	AM 28 Urine Multi-Drug Confirmation Panel 2 by LC-
C2023-2169	1	BCK	AM 28 Blood Multi-Drug Quant Panel 2 by LC-QQQ
C2023-2176	1	BCK	AM 28 Blood Multi-Drug Quant Panel 2 by LC-QQQ



AM# 28: Multi-Drug Quantitation by LC-MS/MS

Extraction Date 10/5/23 Panel 2 Analyst: Anne Nord
Plate lot#: 230710 Item: IDP-122-5 Plate re-test: 01/10/2024

Mobile phase A: 5mM Amm Form + 0.01% FA 0.5M Ammonium Hydroxide
Mobile phase B: 0.01% Formic Acid in MeOH Ethyl Acetate 20% Methanol in Water

Blank Blood Lot: 23J52629 **Urine Blank lot** 8423

Column: Agilent 120 EC-C18 (2.1x 100-2.7um) **LCMS-QQQ ID:** 69679

Pre-Analytic:

- 1. Check levels of mobile phases and needle wash refill as needed. Ensure waste is not full.
- 2. Ensure correct column is installed and begin mobile phase flow allow to equilibrate ~ 30 minutes.

Analytic:

- 1. Remove standards, plate, controls, and samples from cold storage. Allow to reach room temperature.
- 2. Urine hydrolysis pipette 250 ul urine in blank well, add 40 ul BG Turbo, add 100 ul 500 mm sodium phosphate buffer, mix for at least 5 minutes at ambient temperature. Pipette 250µL blood (calibrated pipette) or 250µL hydrolyzed urine in wells of analytical (standards) plate. **Pipette ID: P31168J**
- 3. Pipette 250µL 0.5M ammonium hydroxide in wells of analytical plate.
- 4. Place on shaking incubator at ambient temp., 900rpm for 15 minutes.
- 5. Transfer 300µL of blood+base/urine+base mixture to corresponding wells of SLE+ plate.
- 6. Apply positive pressure for approx. 10-15 seconds (or until no liquid remains on top of sorbent). **(Load at 85-100 PSI- Selector to the right) Manifold ID: 66792**
- 7. Wait 5 minutes.
- 8. Add 900uL ethyl acetate.
- 9. Wait 5 minutes.
- 10. Apply positive pressure for approx. 15 seconds. **(10-15 PSI- Selector to the left).**
- 11. Add 900uL ethyl acetate.
- 12. Wait 5 minutes.
- 13. Apply positive pressure for approx. 15 seconds. **(10-15 PSI- Selector to the left).**
- 14. Remove plate containing eluate. Add 50 ul 1% HCl in MeOH,
- 15. Place on SPE Dry and evaporate to dryness at approx. 35°C.
SPE Dry ID: 66819
- 16. Reconstitute in 100µL 20% MeOH and heat seal plate with foil.

Post-Analytic

- 1. Create batch and process data.
- 2. Make necessary changes to integration limits
- 3. Integration linear and R² values ≥0.98 for each analyte.
- 4. For unknown samples and controls: response ratio within 20% of average of controls and standards, RT within +/- 5% (tramadol RT +/-2%), S/N for primary transition >10 and secondary transitions >5.
- 5. Did all QCs pass for each analyte? Yes, see comments Add Control data to QC tracking spreadsheet.
- 6. Central File Packet to include: LIMS Worklist, Method Checklist, Calibration and Control Reports.

COMMENTS:

Evaluated 9-hydroxyrisperidone, chlorpromazine, risperidone, and zopiclone

AM #28 Multi-Drug Quant. Results

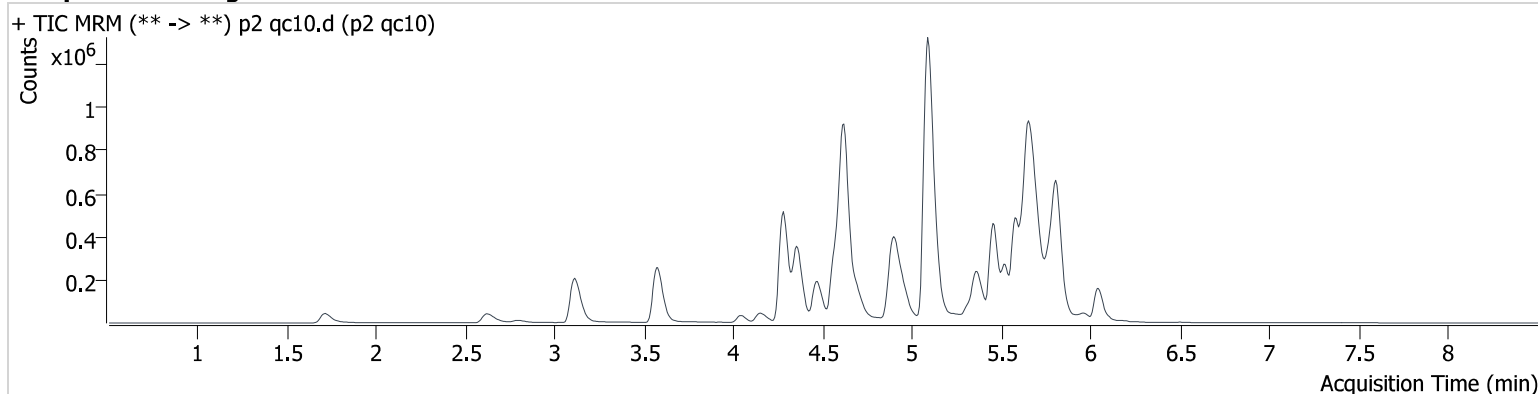
Batch results D:\MassHunter\Data\2023\am 27-28\100523\QuantResults\am28 p2.batch.bin
Calibration Last Update 10/6/2023 9:16:30 AM

Instrument 69679
Type QC
Acq. Method mdqp2 2023.m
Sample Position P2-A6
Injection Volume 5
Acq. Date-Time 10/5/2023 6:04:19 PM
Sample Info.

Data File p2 qc10.d
Sample p2 qc10
Operator Anne Nord
Comment

Only drugs and concentrations listed on the laboratory report itself are appropriate to be used for interpretation purposes. Any drugs or values in the notes but not included on the report are used by laboratory personnel to make determinations/reach conclusions within the confines of the methods.

Sample Chromatogram



Name	RT	Resp.	S/N	Ratio	S/N	ISTD Resp.	Final Conc.
9-Hydroxyrisperidone	4.619	18401	864.6	2334.3 9	1027.9	1828371	10.529 ng/ml
Chlorpromazine	5.779	136814	882.0	0.22	213.8	453637	10.816 ng/ml
Risperidone	4.912	473596	1058.1	11.12	497.4	1100506	9.943 ng/ml
Zopiclone	4.151	27003	409.6	62.36	67.3	116344	9.800 ng/ml

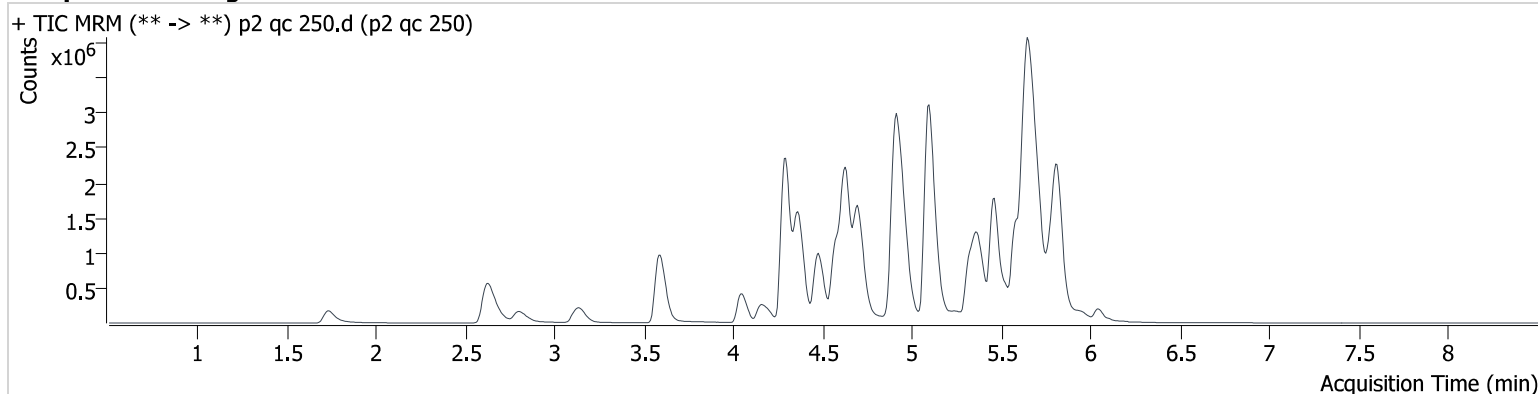
AM #28 Multi-Drug Quant. Results

Batch results D:\MassHunter\Data\2023\am 27-28\100523\QuantResults\am28 p2.batch.bin
Calibration Last Update 10/6/2023 9:16:30 AM

Instrument 69679
Type QC
Acq. Method mdqp2 2023.m
Sample Position P2-C6
Injection Volume 5
Acq. Date-Time 10/5/2023 7:36:26 PM
Sample Info.

Data File p2 qc 250.d
Sample p2 qc 250
Operator Anne Nord
Comment Only drugs and concentrations listed on the laboratory report itself are appropriate to be used for interpretation purposes. Any drugs or values in the notes but not included on the report are used by laboratory personnel to make determinations/reach conclusions within the confines of the methods.

Sample Chromatogram



Name	RT	Resp.	S/N	Ratio	S/N	ISTD Resp.	Final Conc.
9-Hydroxyrisperidone	4.625	209311	1733.0	2404.7 0	675.7	892997	244.348 ng/ml
Chlorpromazine	5.779	1915537	36048.7	0.21	2034.6	272655	268.263 ng/ml
Risperidone	4.912	5417044	13259.5	10.78	2909.0	509829	238.761 ng/ml
Zopiclone	4.151	532943	20210.3	60.35	35983.3	90286	249.653 ng/ml

AM #28 Multi-Drug Quant. Results

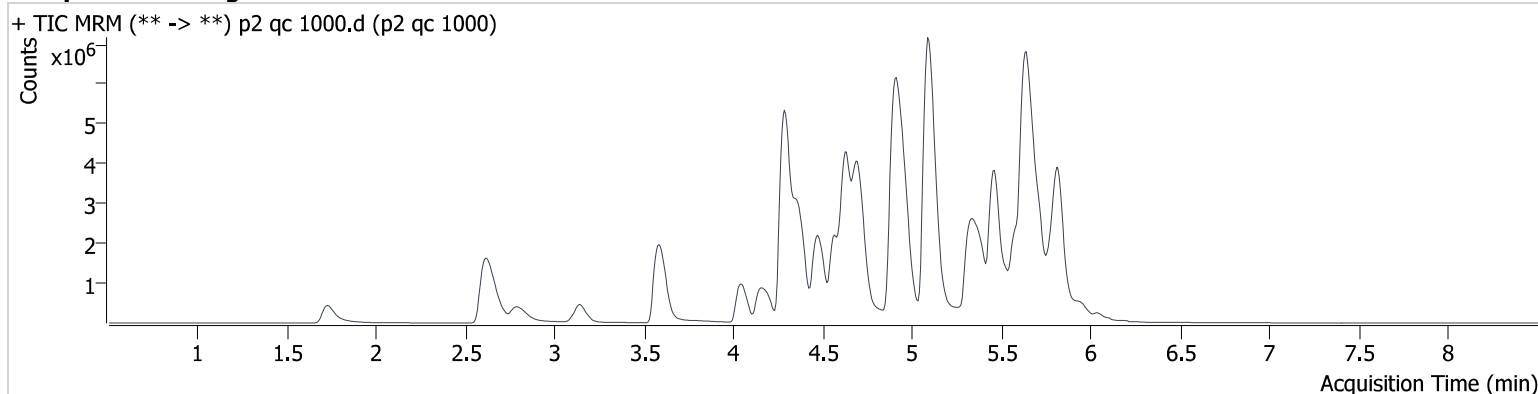
Batch results D:\MassHunter\Data\2023\am 27-28\100523\QuantResults\am28 p2.batch.bin
Calibration Last Update 10/6/2023 9:16:30 AM

Instrument 69679
Type QC
Acq. Method mdqp2 2023.m
Sample Position P2-D6
Injection Volume 5
Acq. Date-Time 10/5/2023 6:22:47 PM
Sample Info.

Data File p2 qc 1000.d
Sample p2 qc 1000
Operator Anne Nord
Comment

Only drugs and concentrations listed on the laboratory report itself are appropriate to be used for interpretation purposes. Any drugs or values in the notes but not included on the report are used by laboratory personnel to make determinations/reach conclusions within the confines of the methods.

Sample Chromatogram



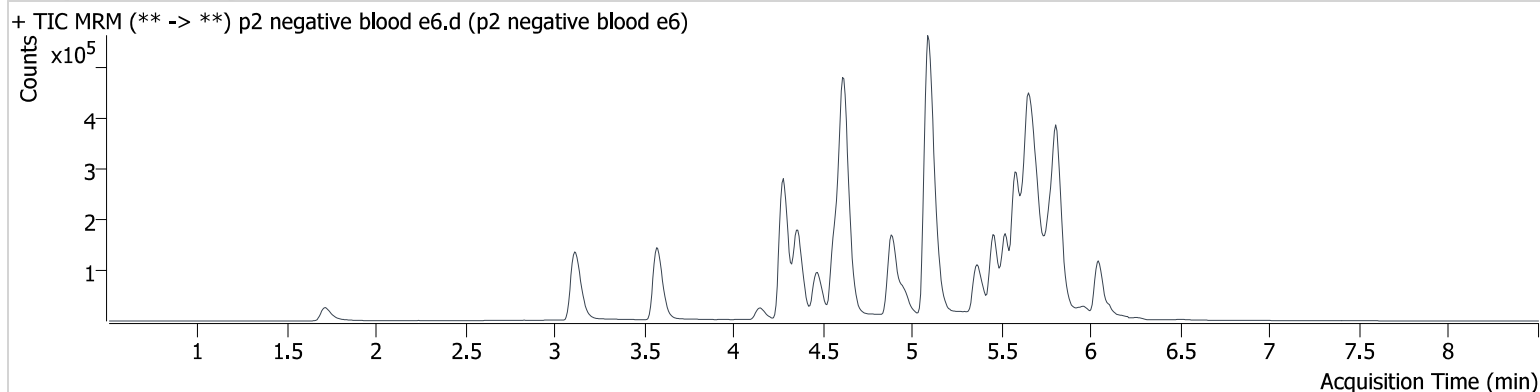
Name	RT	Resp.	S/N	Ratio	S/N	ISTD Resp.	Final Conc.
9-Hydroxyrisperidone	4.625	462867	1664.7	2544.3 0	1313.3	490973	982.684 ng/ml
Chlorpromazine	5.772	4186320	212959.0	0.20	4713.5	152692	1049.011 ng/ml
Risperidone	4.918	12219265	36850.0	10.70	1692.3	303331	904.430 ng/ml
Zopiclone	4.144	2004341	2646.7	61.00	6722.5	85252	994.406 ng/ml

AM #28 Multi-Drug Quant. Results

Batch results D:\MassHunter\Data\2023\am 27-28\100523\QuantResults\am28 p2.batch.bin
Calibration Last Update 10/6/2023 9:16:30 AM

Instrument	69679	Data File	p2 negative blood e6.d
Type	Sample	Sample	p2 negative blood e6
Acq. Method	mdqp2 2023.m	Operator	Anne Nord
Sample Position	P2-E6	Comment	Only drugs and concentrations listed on the laboratory report itself are appropriate to be used for interpretation purposes. Any drugs or values in the notes but not included on the report are used by laboratory personnel to make determinations/reach conclusions within the confines of the methods.
Injection Volume	5		
Acq. Date-Time	10/5/2023 6:41:12 PM		
Sample Info.			

Sample Chromatogram



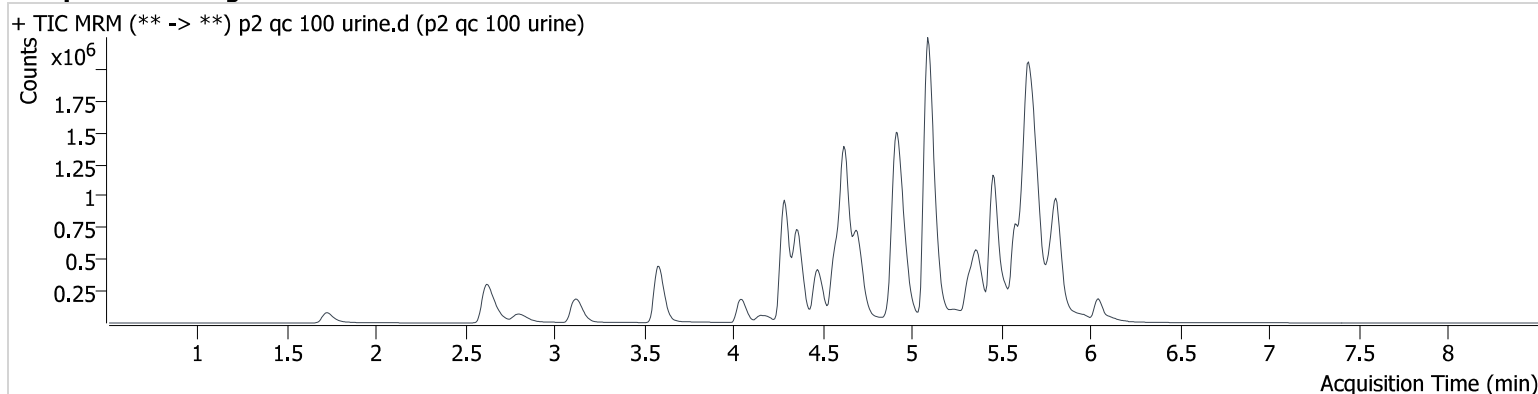
AM #28 Multi-Drug Quant. Results

Batch results D:\MassHunter\Data\2023\am 27-28\100523\QuantResults\am28 p2.batch.bin
Calibration Last Update 10/6/2023 9:16:30 AM

Instrument 69679
Type QC
Acq. Method mdqp2 2023.m
Sample Position P2-B6
Injection Volume 5
Acq. Date-Time 10/5/2023 6:13:33 PM
Sample Info.

Data File p2 qc 100 urine.d
Sample p2 qc 100 urine
Operator Anne Nord
Comment Only drugs and concentrations listed on the laboratory report itself are appropriate to be used for interpretation purposes. Any drugs or values in the notes but not included on the report are used by laboratory personnel to make determinations/reach conclusions within the confines of the methods.

Sample Chromatogram



Name	RT	Resp.	S/N	Ratio	S/N	ISTD Resp.	Final Conc.
9-Hydroxyrisperidone	4.619	117695	709.4	2252.3 ₃	2155.8	1188381	103.267 ng/ml
Chlorpromazine	5.779	571892	10690.3	0.22	564.4	198333	109.673 ng/ml
Risperidone	4.912	3776843	3353.0	10.70	3821.8	757869	112.136 ng/ml
Zopiclone	4.144	91958	1053.6	61.34	11255.3	38945	99.855 ng/ml

AM #28 Multi-Drug Quant. Results

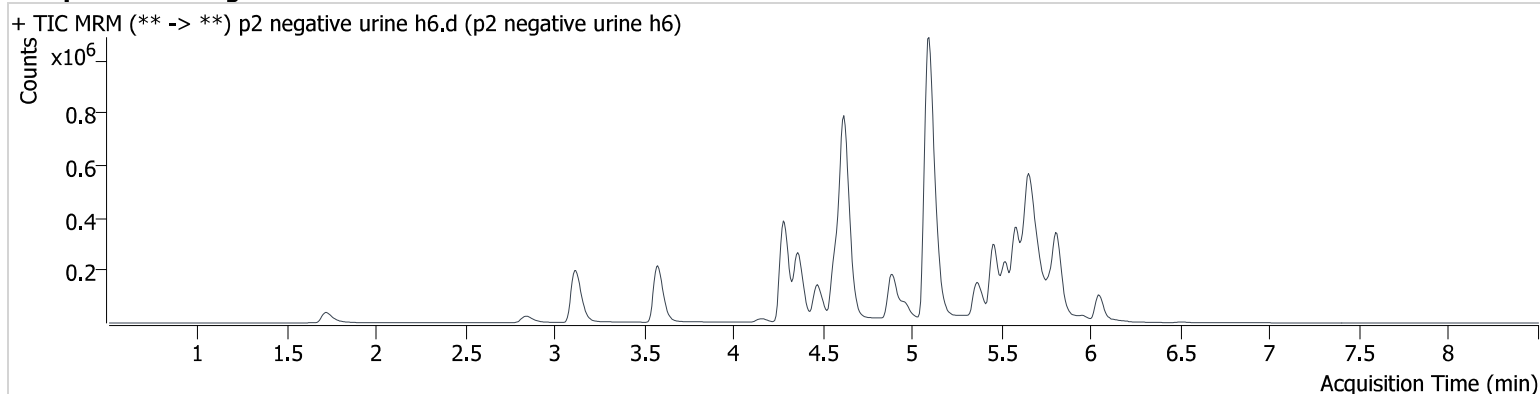
Batch results D:\MassHunter\Data\2023\am 27-28\100523\QuantResults\am28 p2.batch.bin
Calibration Last Update 10/6/2023 9:16:30 AM

Instrument 69679
Type Sample
Acq. Method mdqp2 2023.m
Sample Position P2-H6
Injection Volume 5
Acq. Date-Time 10/5/2023 7:18:01 PM
Sample Info.

Data File p2 negative urine h6.d
Sample p2 negative urine h6
Operator Anne Nord
Comment

Only drugs and concentrations listed on the laboratory report itself are appropriate to be used for interpretation purposes. Any drugs or values in the notes but not included on the report are used by laboratory personnel to make determinations/reach conclusions within the confines of the methods.

Sample Chromatogram

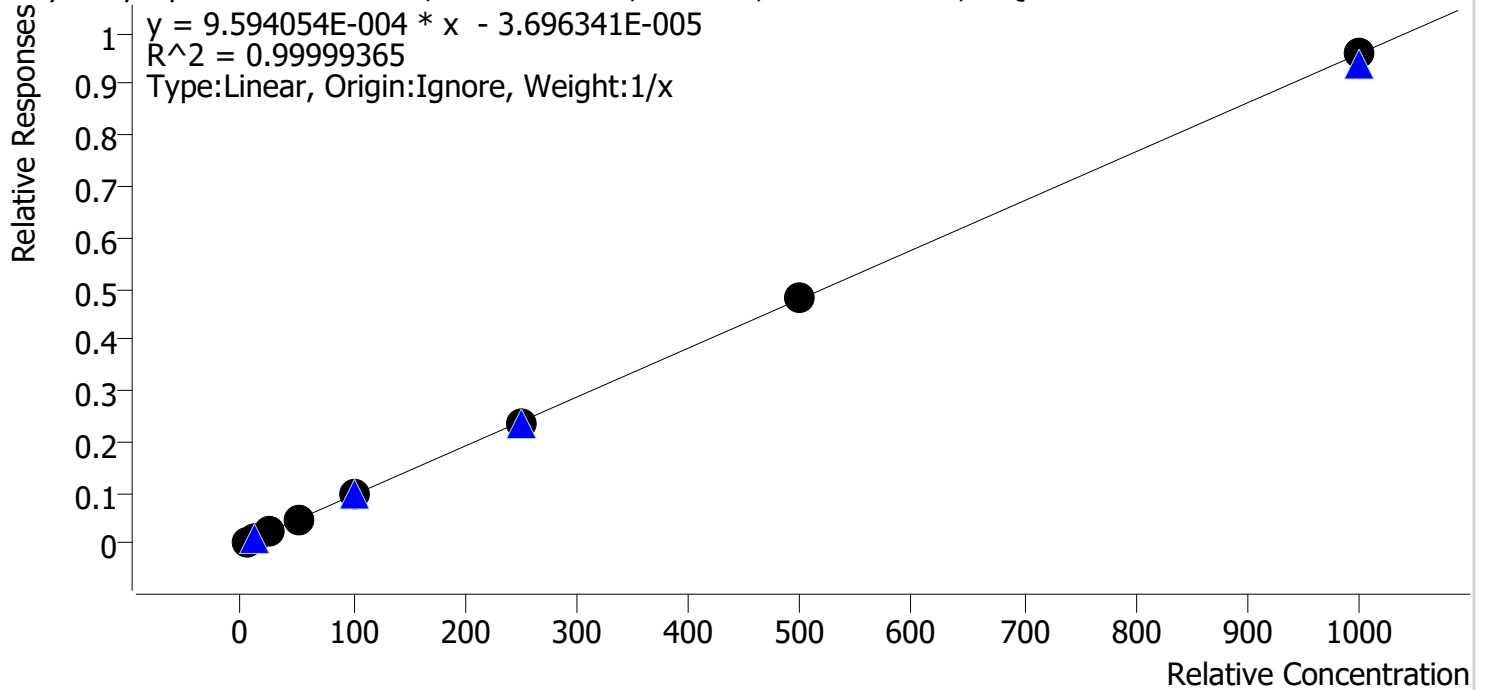


Compound Calibration Report



Batch results D:\MassHunter\Data\2023\lam 27-28\100523\QuantResults\lam28 p2.batch.bin
Last Cal. Update 10/6/2023 9:16 AM
Analyst Name ISP\datastor
Analyte 9-Hydroxyrisperidone **Internal Standard** 9-OH-Respiridone-D4

9-Hydroxyrisperidone - 8 Levels, 8 Levels Used, 8 Points, 8 Points Used, 4 QCs



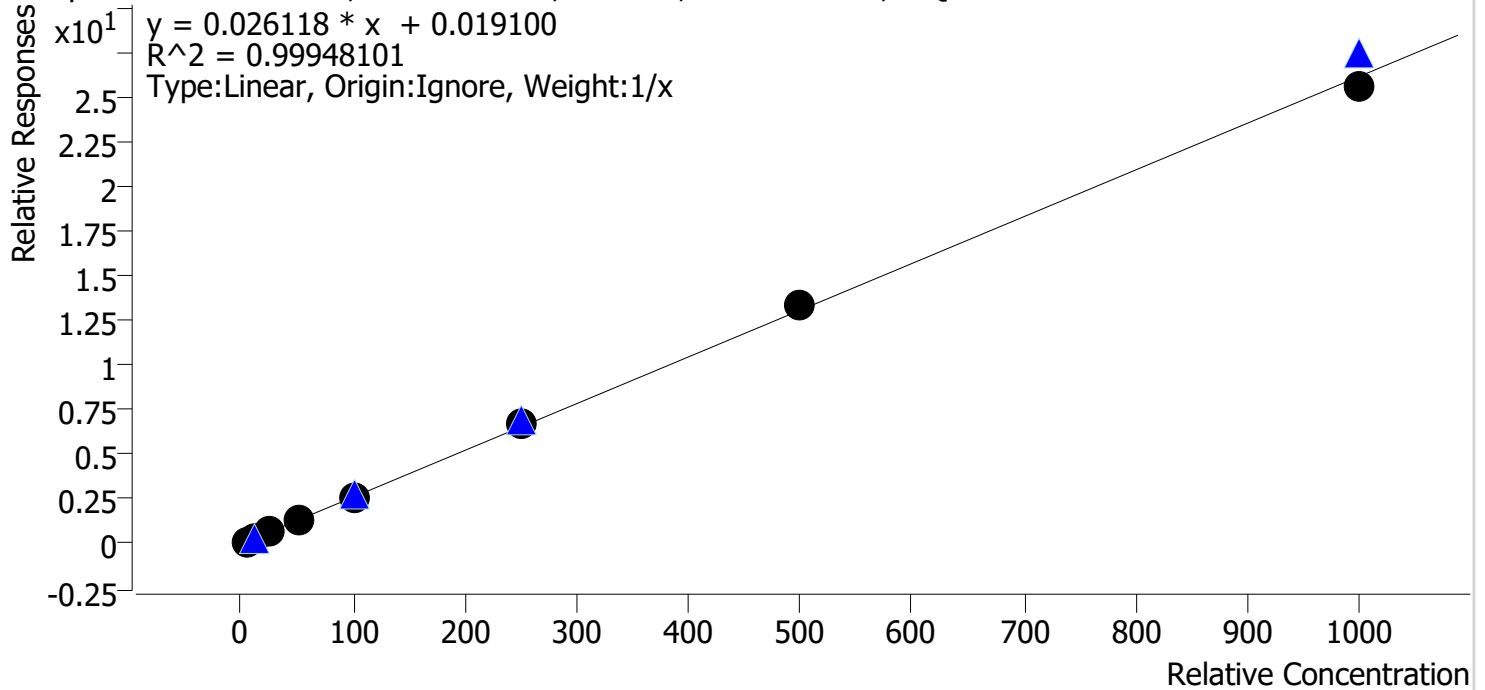
Sample	Level	Enabled	Expected Concentration	Final Concentration	Accuracy
p2 cal 1 mdq	1	✓	5.0	5.1	101.5
p2 cal 2 mdq	2	✓	10.0	9.8	98.5
p2 cal 3 mdq	3	✓	25.0	25.1	100.5
p2 cal 4 mdq	4	✓	50.0	49.7	99.4
p2 cal 5 mdq	5	✓	100.0	100.4	100.4
p2 cal 6 mdq	6	✓	250.0	249.1	99.7
p2 cal 7 mdq	7	✓	500.0	500.2	100.0
p2 cal 8 mdq	8	✓	1000.0	1000.5	100.0

Compound Calibration Report



Batch results D:\MassHunter\Data\2023\lam 27-28\100523\QuantResults\lam28 p2.batch.bin
Last Cal. Update 10/6/2023 9:16 AM
Analyst Name ISP\datastor
Analyte Chlorpromazine **Internal Standard** Chlorpromazine-D3

Chlorpromazine - 8 Levels, 8 Levels Used, 8 Points, 8 Points Used, 4 QCs



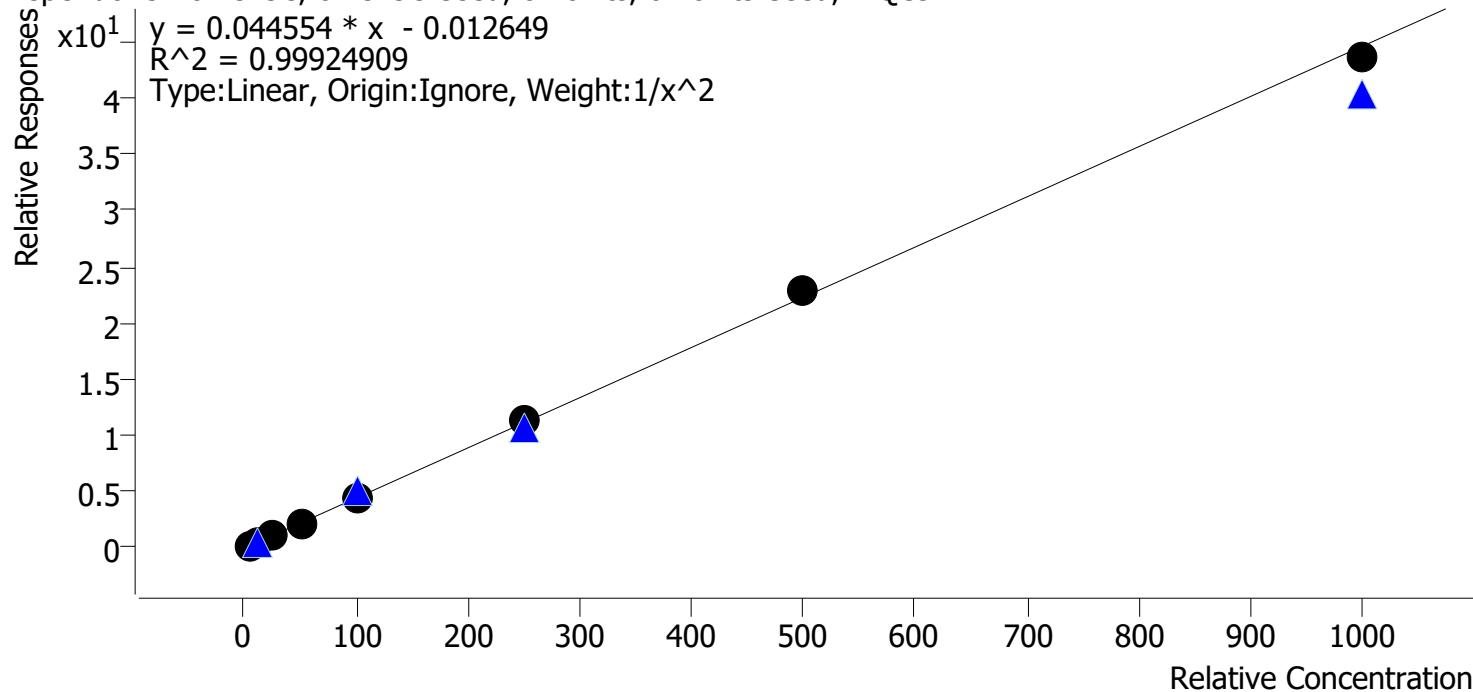
Sample	Level	Enabled	Expected Concentration	Final Concentration	Accuracy
p2 cal 1 mdq	1	✓	5.0	4.5	90.2
p2 cal 2 mdq	2	✓	10.0	10.1	100.7
p2 cal 3 mdq	3	✓	25.0	25.8	103.2
p2 cal 4 mdq	4	✓	50.0	50.9	101.7
p2 cal 5 mdq	5	✓	100.0	101.7	101.7
p2 cal 6 mdq	6	✓	250.0	255.5	102.2
p2 cal 7 mdq	7	✓	500.0	511.7	102.3
p2 cal 8 mdq	8	✓	1000.0	979.9	98.0

Compound Calibration Report



Batch results D:\MassHunter\Data\2023\lam 27-28\100523\QuantResults\lam28 p2.batch.bin
Last Cal. Update 10/6/2023 9:16 AM
Analyst Name ISP\datastor
Analyte Risperidone **Internal Standard** Clozapine-D4

Risperidone - 8 Levels, 8 Levels Used, 8 Points, 8 Points Used, 4 QCs

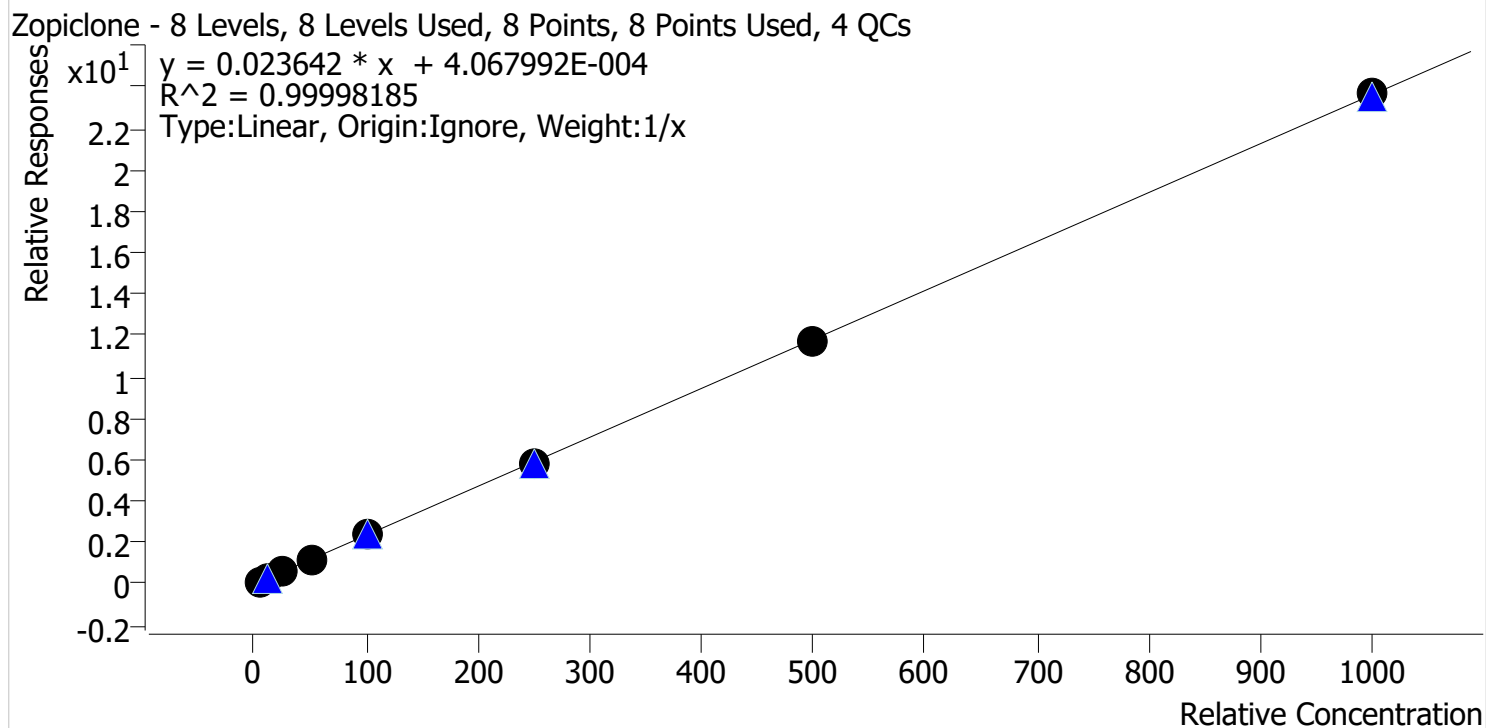


Sample	Level	Enabled	Expected Concentration	Final Concentration	Accuracy
p2 cal 1 mdq	1	✓	5.0	5.0	100.4
p2 cal 2 mdq	2	✓	10.0	10.1	100.7
p2 cal 3 mdq	3	✓	25.0	24.1	96.2
p2 cal 4 mdq	4	✓	50.0	49.2	98.5
p2 cal 5 mdq	5	✓	100.0	100.6	100.6
p2 cal 6 mdq	6	✓	250.0	256.7	102.7
p2 cal 7 mdq	7	✓	500.0	515.6	103.1
p2 cal 8 mdq	8	✓	1000.0	977.6	97.8

Compound Calibration Report



Batch results D:\MassHunter\Data\2023\lam 27-28\100523\QuantResults\lam28 p2.batch.bin
Last Cal. Update 10/6/2023 9:16 AM
Analyst Name ISP\datastor
Analyte Zopiclone **Internal Standard** Zopiclone-D4



Sample	Level	Enabled	Expected Concentration	Final Concentration	Accuracy
p2 cal 1 mdq	1	✓	5.0	5.0	100.4
p2 cal 2 mdq	2	✓	10.0	10.0	100.2
p2 cal 3 mdq	3	✓	25.0	25.1	100.2
p2 cal 4 mdq	4	✓	50.0	49.4	98.7
p2 cal 5 mdq	5	✓	100.0	100.9	100.9
p2 cal 6 mdq	6	✓	250.0	249.6	99.8
p2 cal 7 mdq	7	✓	500.0	497.7	99.5
p2 cal 8 mdq	8	✓	1000.0	1002.3	100.2

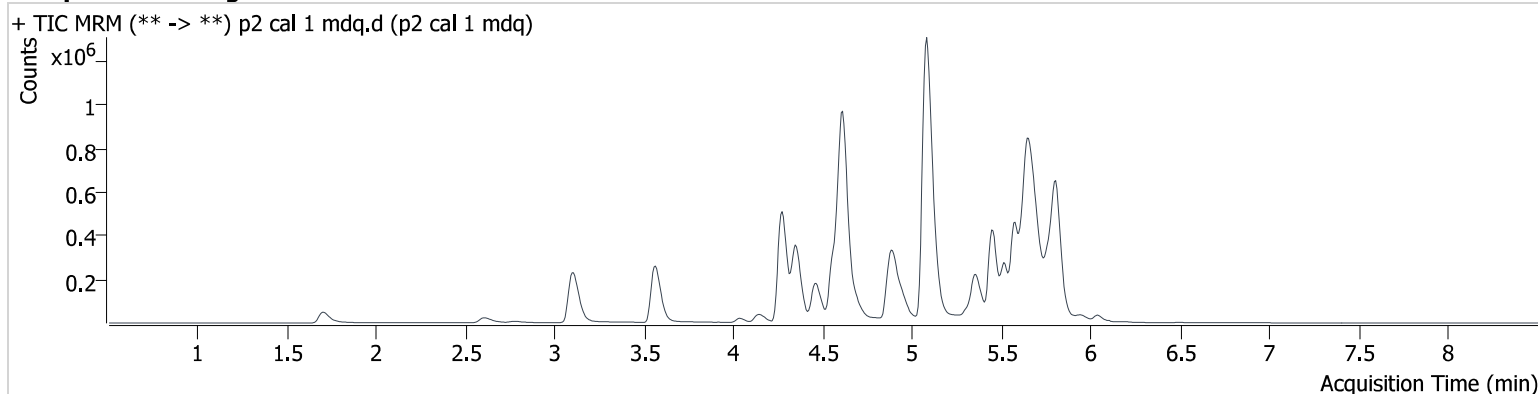
AM #28 Multi-Drug Quant. Results

Batch results D:\MassHunter\Data\2023\am 27-28\100523\QuantResults\am28 p2.batch.bin
Calibration Last Update 10/6/2023 9:16:30 AM

Instrument 69679
Type Cal
Acq. Method mdqp2 2023.m
Sample Position P2-A5
Injection Volume 5
Acq. Date-Time 10/5/2023 4:41:32 PM
Sample Info.

Data File p2 cal 1 mdq.d
Sample p2 cal 1 mdq
Operator Anne Nord
Comment Only drugs and concentrations listed on the laboratory report itself are appropriate to be used for interpretation purposes. Any drugs or values in the notes but not included on the report are used by laboratory personnel to make determinations/reach conclusions within the confines of the methods.

Sample Chromatogram



Name	RT	Resp.	S/N	Ratio	S/N	ISTD Resp.	Final Conc.
9-Hydroxyrisperidone	4.612	9995	399.9	2244.6 6	2660.9	2068818	5.074 ng/ml
Chlorpromazine	5.772	70255	33720.3	0.18	138.1	513349	4.509 ng/ml
Risperidone	4.905	253482	8943.9	10.78	268.0	1200784	5.022 ng/ml
Zopiclone	4.144	14279	7695.0	57.96	607.3	119944	5.018 ng/ml

AM #28 Multi-Drug Quant. Results

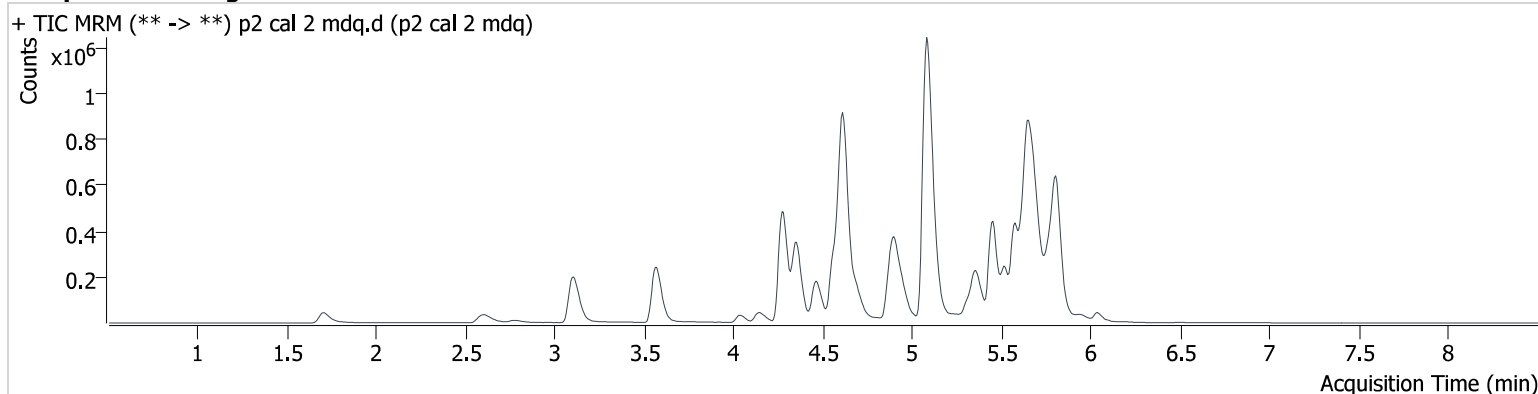
Batch results D:\MassHunter\Data\2023\am 27-28\100523\QuantResults\am28 p2.batch.bin
Calibration Last Update 10/6/2023 9:16:30 AM

Instrument 69679
Type Cal
Acq. Method mdqp2 2023.m
Sample Position P2-B5
Injection Volume 5
Acq. Date-Time 10/5/2023 4:50:44 PM
Sample Info.

Data File p2 cal 2 mdq.d
Sample p2 cal 2 mdq
Operator Anne Nord
Comment

Only drugs and concentrations listed on the laboratory report itself are appropriate to be used for interpretation purposes. Any drugs or values in the notes but not included on the report are used by laboratory personnel to make determinations/reach conclusions within the confines of the methods.

Sample Chromatogram



Name	RT	Resp.	S/N	Ratio	S/N	ISTD Resp.	Final Conc.
9-Hydroxyrisperidone	4.619	17165	875.5	2375.2 1	1650.8	1824335	9.845 ng/ml
Chlorpromazine	5.772	122529	8230.2	0.17	103.9	434441	10.067 ng/ml
Risperidone	4.905	457664	6815.6	11.01	794.4	1049239	10.074 ng/ml
Zopiclone	4.144	27628	8029.2	60.12	2697.5	116447	10.018 ng/ml

AM #28 Multi-Drug Quant. Results

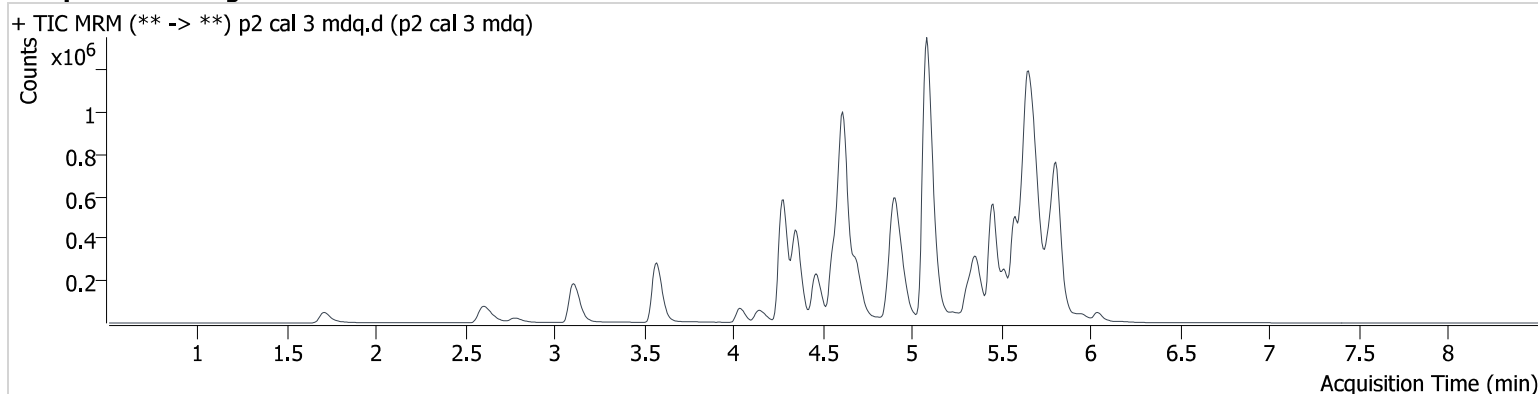
Batch results D:\MassHunter\Data\2023\am 27-28\100523\QuantResults\am28 p2.batch.bin
Calibration Last Update 10/6/2023 9:16:30 AM

Instrument 69679
Type Cal
Acq. Method mdqp2 2023.m
Sample Position P2-C5
Injection Volume 5
Acq. Date-Time 10/5/2023 4:59:56 PM
Sample Info.

Data File p2 cal 3 mdq.d
Sample p2 cal 3 mdq
Operator Anne Nord
Comment

Only drugs and concentrations listed on the laboratory report itself are appropriate to be used for interpretation purposes. Any drugs or values in the notes but not included on the report are used by laboratory personnel to make determinations/reach conclusions within the confines of the methods.

Sample Chromatogram



Name	RT	Resp.	S/N	Ratio	S/N	ISTD Resp.	Final Conc.
9-Hydroxyrisperidone	4.612	38183	533.7	2273.5 4	2220.6	1586717	25.121 ng/ml
Chlorpromazine	5.772	263157	2490.0	0.19	186.7	379638	25.809 ng/ml
Risperidone	4.905	985604	6854.9	11.07	795.9	930574	24.056 ng/ml
Zopiclone	4.137	64602	916.5	60.15	1061.4	108958	25.061 ng/ml

AM #28 Multi-Drug Quant. Results

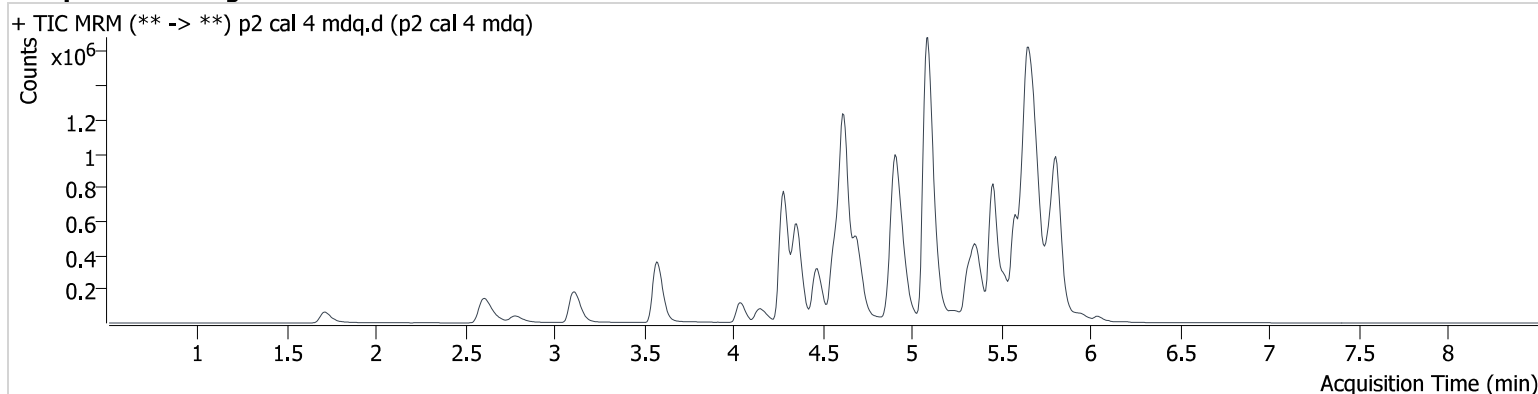
Batch results D:\MassHunter\Data\2023\am 27-28\100523\QuantResults\am28 p2.batch.bin
Calibration Last Update 10/6/2023 9:16:30 AM

Instrument 69679
Type Cal
Acq. Method mdqp2 2023.m
Sample Position P2-D5
Injection Volume 5
Acq. Date-Time 10/5/2023 5:09:08 PM
Sample Info.

Data File p2 cal 4 mdq.d
Sample p2 cal 4 mdq
Operator Anne Nord
Comment

Only drugs and concentrations listed on the laboratory report itself are appropriate to be used for interpretation purposes. Any drugs or values in the notes but not included on the report are used by laboratory personnel to make determinations/reach conclusions within the confines of the methods.

Sample Chromatogram



Name	RT	Resp.	S/N	Ratio	S/N	ISTD Resp.	Final Conc.
9-Hydroxyrisperidone	4.619	72457	953.3	2327.4 9	2417.8	1520832	49.698 ng/ml
Chlorpromazine	5.772	477347	331947.6	0.19	794.2	354306	50.854 ng/ml
Risperidone	4.905	1916727	8707.3	10.96	797.7	878968	49.228 ng/ml
Zopiclone	4.144	121761	7165.4	61.56	1292.5	104287	49.367 ng/ml

AM #28 Multi-Drug Quant. Results

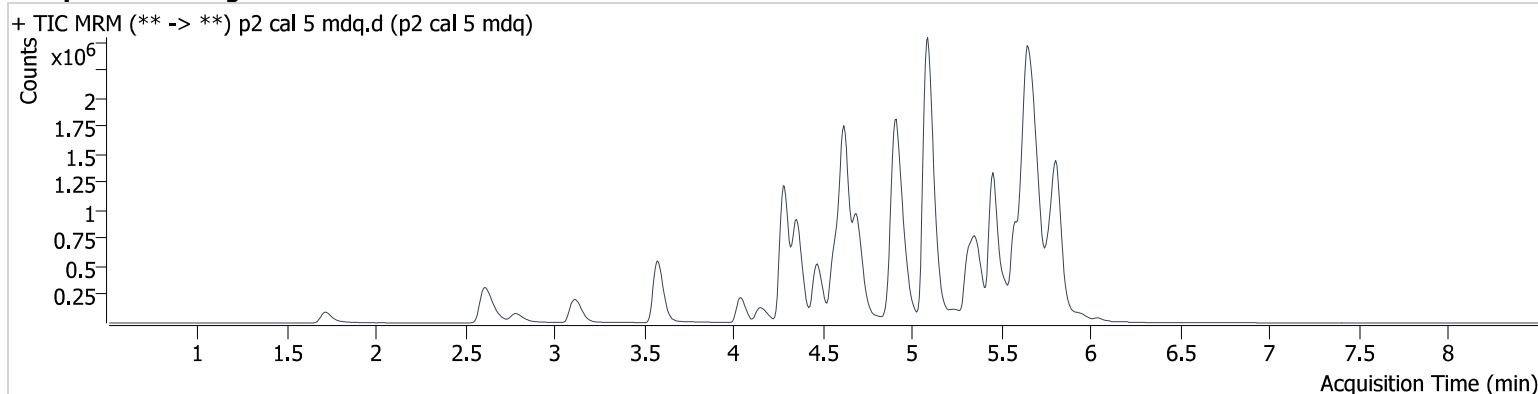
Batch results D:\MassHunter\Data\2023\am 27-28\100523\QuantResults\am28 p2.batch.bin
Calibration Last Update 10/6/2023 9:16:30 AM

Instrument 69679
Type Cal
Acq. Method mdqp2 2023.m
Sample Position P2-E5
Injection Volume 5
Acq. Date-Time 10/5/2023 5:18:19 PM
Sample Info.

Data File p2 cal 5 mdq.d
Sample p2 cal 5 mdq
Operator Anne Nord
Comment

Only drugs and concentrations listed on the laboratory report itself are appropriate to be used for interpretation purposes. Any drugs or values in the notes but not included on the report are used by laboratory personnel to make determinations/reach conclusions within the confines of the methods.

Sample Chromatogram



Name	RT	Resp.	S/N	Ratio	S/N	ISTD Resp.	Final Conc.
9-Hydroxyrisperidone	4.619	145648	206662.5	2341.2 ₃	2752.3	1511975	100.444 ng/ml
Chlorpromazine	5.772	904195	14154.9	0.21	1048.2	338083	101.670 ng/ml
Risperidone	4.905	3911866	24570.3	10.71	5487.2	875259	100.597 ng/ml
Zopiclone	4.144	238310	337.5	61.19	6996.6	99916	100.865 ng/ml

AM #28 Multi-Drug Quant. Results

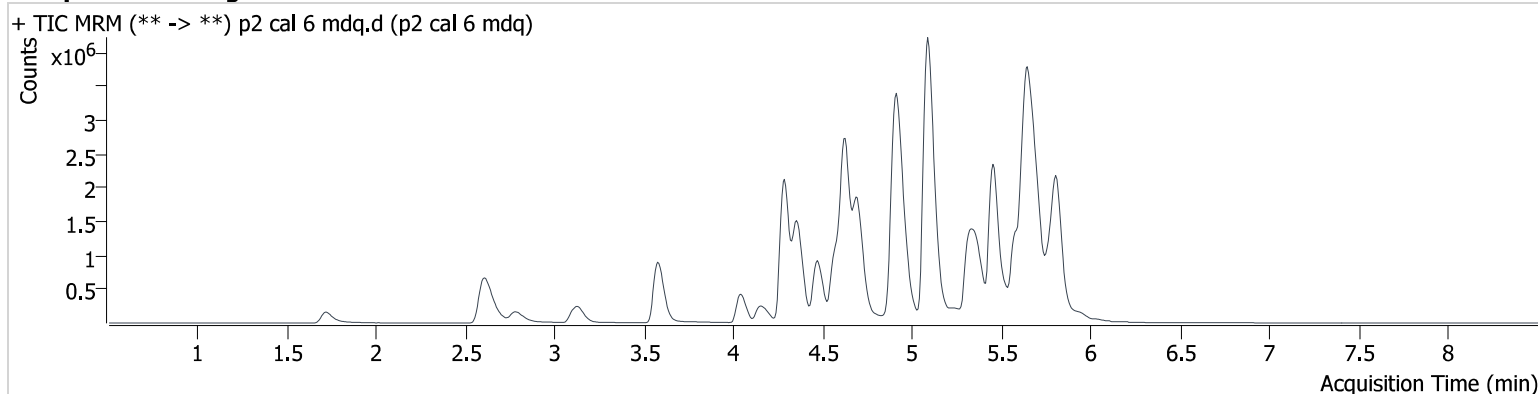
Batch results D:\MassHunter\Data\2023\am 27-28\100523\QuantResults\am28 p2.batch.bin
Calibration Last Update 10/6/2023 9:16:30 AM

Instrument 69679
Type Cal
Acq. Method mdqp2 2023.m
Sample Position P2-F5
Injection Volume 5
Acq. Date-Time 10/5/2023 5:27:31 PM
Sample Info.

Data File p2 cal 6 mdq.d
Sample p2 cal 6 mdq
Operator Anne Nord
Comment

Only drugs and concentrations listed on the laboratory report itself are appropriate to be used for interpretation purposes. Any drugs or values in the notes but not included on the report are used by laboratory personnel to make determinations/reach conclusions within the confines of the methods.

Sample Chromatogram



Name	RT	Resp.	S/N	Ratio	S/N	ISTD Resp.	Final Conc.
9-Hydroxyrisperidone	4.619	289246	1568.7	2313.8 ₃	2982.3	1210353	249.126 ng/ml
Chlorpromazine	5.772	1667262	27324.0	0.19	790.7	249116	255.521 ng/ml
Risperidone	4.912	8100218	154572.0	10.60	23753.0	709138	256.659 ng/ml
Zopiclone	4.144	506292	1324.7	60.79	252818.3	85798	249.574 ng/ml

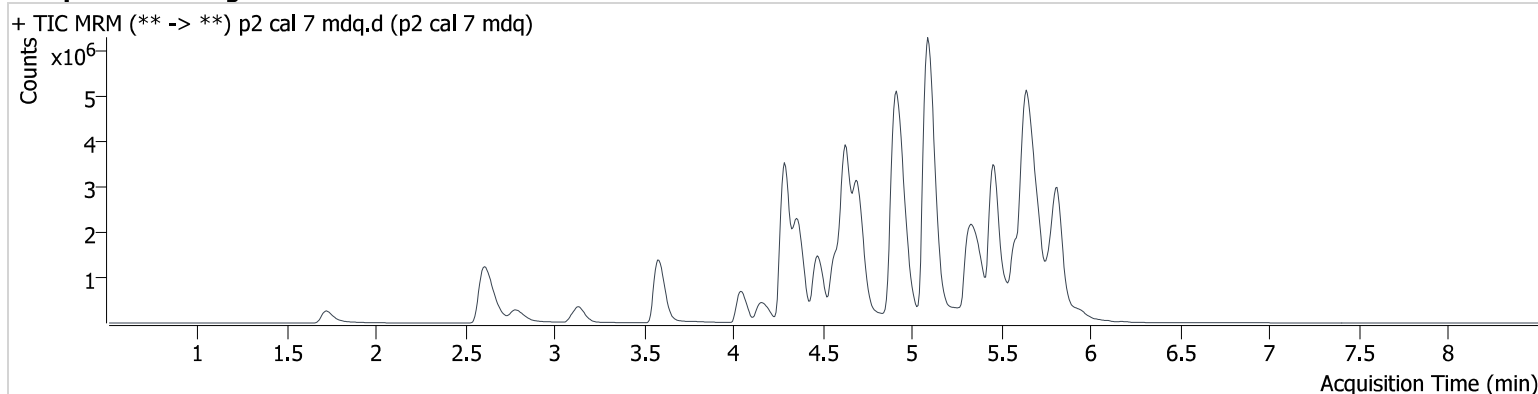
AM #28 Multi-Drug Quant. Results

Batch results D:\MassHunter\Data\2023\am 27-28\100523\QuantResults\am28 p2.batch.bin
Calibration Last Update 10/6/2023 9:16:30 AM

Instrument 69679
Type Cal
Acq. Method mdqp2 2023.m
Sample Position P2-G5
Injection Volume 5
Acq. Date-Time 10/5/2023 5:36:43 PM
Sample Info.

Data File p2 cal 7 mdq.d
Sample p2 cal 7 mdq
Operator Anne Nord
Comment Only drugs and concentrations listed on the laboratory report itself are appropriate to be used for interpretation purposes. Any drugs or values in the notes but not included on the report are used by laboratory personnel to make determinations/reach conclusions within the confines of the methods.

Sample Chromatogram



Name	RT	Resp.	S/N	Ratio	S/N	ISTD Resp.	Final Conc.
9-Hydroxyrisperidone	4.625	464623	2635.4	2489.4 6	1366.9	968198	500.228 ng/ml
Chlorpromazine	5.772	2628424	137412.5	0.21	3352.1	196389	511.710 ng/ml
Risperidone	4.912	13169052	13528.2	10.37	2938.9	573547	515.626 ng/ml
Zopiclone	4.144	974201	93818.1	60.55	13669.5	82781	497.749 ng/ml

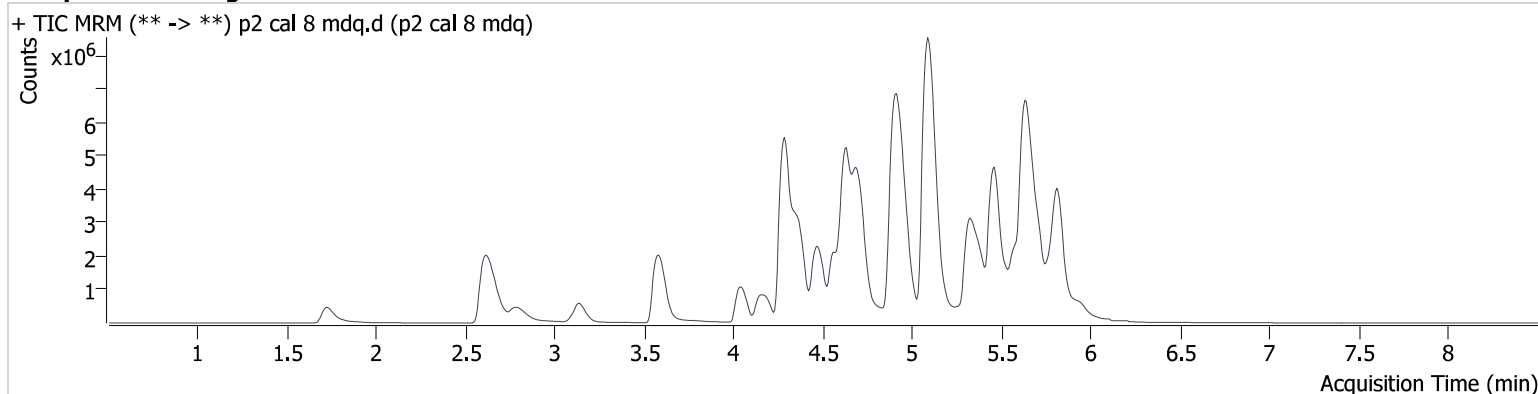
AM #28 Multi-Drug Quant. Results

Batch results D:\MassHunter\Data\2023\am 27-28\100523\QuantResults\am28 p2.batch.bin
Calibration Last Update 10/6/2023 9:16:30 AM

Instrument 69679
Type Cal
Acq. Method mdqp2 2023.m
Sample Position P2-H5
Injection Volume 5
Acq. Date-Time 10/5/2023 5:45:56 PM
Sample Info.

Data File p2 cal 8 mdq.d
Sample p2 cal 8 mdq
Operator Anne Nord
Comment Only drugs and concentrations listed on the laboratory report itself are appropriate to be used for interpretation purposes. Any drugs or values in the notes but not included on the report are used by laboratory personnel to make determinations/reach conclusions within the confines of the methods.

Sample Chromatogram



Name	RT	Resp.	S/N	Ratio	S/N	ISTD Resp.	Final Conc.
9-Hydroxyrisperidone	4.625	634301	10290.4	2475.0 9	32934.7	660859	1000.464 ng/ml
Chlorpromazine	5.772	4096704	20031.7	0.19	222.3	159961	979.860 ng/ml
Risperidone	4.918	17736906	80104.6	10.39	987.8	407334	977.604 ng/ml
Zopiclone	4.144	1914805	3835.0	60.47	292124.7	80799	1002.348 ng/ml